

**Connect your  
favourite SCADA to  
your remote sites**



**Industrial  
VPN  
Appliance**

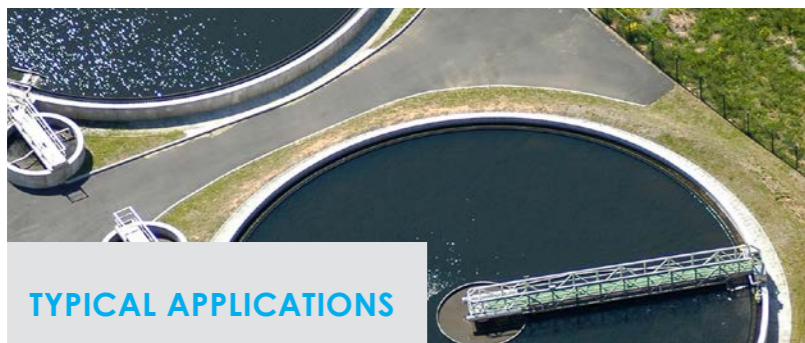
[www.ewon.biz/eFive](http://www.ewon.biz/eFive)

The eFive makes the perfect bridge between your remote site and your SCADA in a wide range of applications. Two different versions are proposed: the eFive 25 and the eFive 100 allowing respectively up to 50 and 200 permanent remote VPN connections. Both are designed for easy deployment and management through embedded Web based user interface.

**eFive**

# Why eFive is the best choice for real-time control of non-critical assets

- Open solution compliant with world-leading PLC protocols and SCADA software (no OPC server)
- Easy to set up using wizards
- Fully secure VPN solution
- VPN bridge mode for easy deployment
- Versatility to connect using 2G, 3G, DSL or LAN connection options with fallback



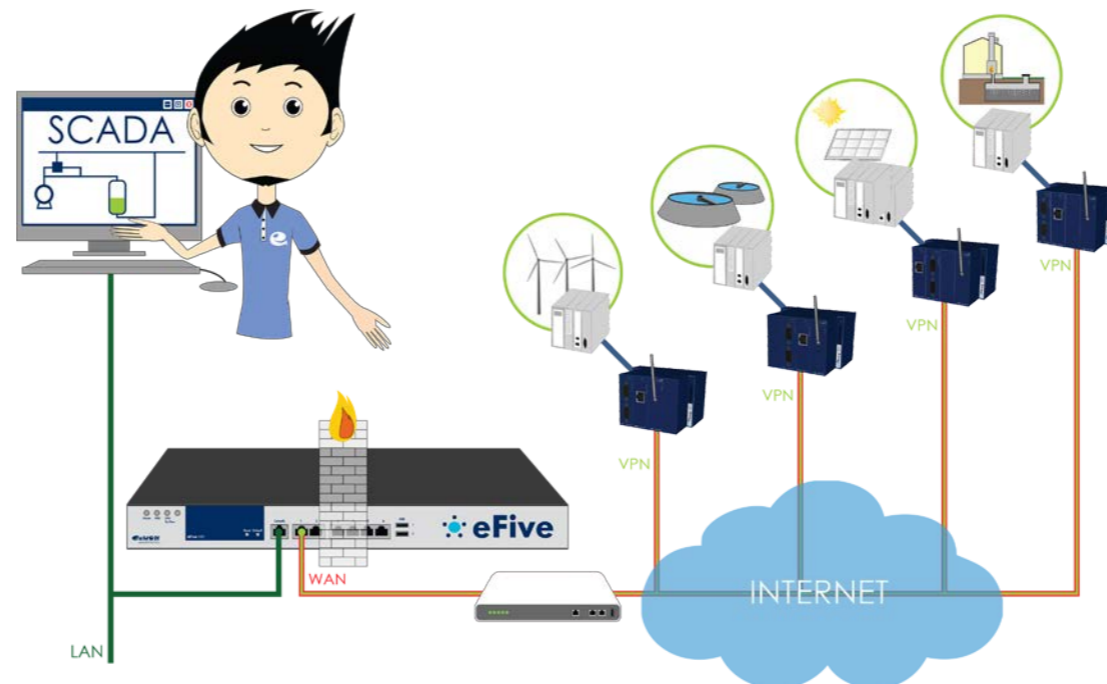
## TYPICAL APPLICATIONS

Water and waste water  
Wind power generation  
Photovoltaics  
Biogas  
...



# Activate your remote control eFive

Your remote control application is just a few clicks away...



## Typical architecture

eFive provides a dedicated Internet connection to your SCADA network. Your eFive handles all connectivity and security tasks to enable your SCADA to connect to remote sites.

1. eFive = Firewall + VPN server
2. Requirements: Internet access with fixed IP or DynDNS

## PLC + eWON

- Modbus TCP server and built-in gateway for easy integration with a wide variety of industrial Ethernet/Serial devices using various protocols: PPI, MPI, Profibus, ISO TCP, DF1, EtherNet/IP®, Modbus RTU, Modbus TCP, FINS Hostlink, FINS TCP, etc.
- Data buffering in case of communication loss
- Full industrial grade routers
- Easy setup using wizards

## SCADA + eFive

- Easy integration in the local IT network
- Plug'n Play setup
- Routing and security
- VPN bridge mode for seamless access to remote devices

## What is eFive?

### Easy-to-manage firewall

The eFive embedded firewall protects your control network from Internet threats while providing appropriate access to resources inside and outside your network. The firewall interface is very user-friendly and intuitive. eFive Traffic Shaping and Traffic/Systems/Firewall/IDS graphs are available to help you monitor and secure your application.

### Secure VPN server

A secure VPN (True SSL/TLS, Open VPN) extranet is built between your PLC and SCADA. Setup is easy, using wizards, and does not require IT expertise. Up to 200 remote sites can be connected and interconnected.

## GOLD MAINTENANCE PACKAGE

In addition to lifetime free Standard Maintenance, the eFive's Gold Maintenance Package provides a higher level of support that helps you keep your SCADA application running smoothly.

1. Direct remote support via Internet
2. Next business day product replacement
3. Warranty extension to 3 years max.



### Gold Maintenance Package - 1 Year

For eFive 25 - Product ref.E591101  
For eFive 100 - Product ref. : E591201

### Gold Maintenance Package - 3 Years

For eFive 25 - Product ref.: E593101  
For eFive 100 - Product ref.: E593201

# Select your eFive

	 eFive 25	 eFive 100
Number of connections	50	200
VPN throughput	25 Mbps	55 Mbps
Casing	Desktop	Rack mount, 1U
Dimensions	44 mm (H) x 230 mm (W) x 152.1 mm (D) 1.73" (H) x 9.05" (W) x 5.98" (D)	44 mm (H) x 430 mm (W) x 248 mm (D) 1.73" (H) x 16.93" (W) x 9.76" (D)
Power supply	External 12 V - 5 A AC/DC power adapter included	230 VAC, 3 A max.
Ethernet	4 x 10/100/1000 Mbps (RJ45)	6 x 10/100/1000 Mbps (RJ45)
Serial interface	1 x RS232 (DB9) for console access	1 x RS232 (RJ45) for console access
USB interfaces	2 x USB ports	2 x USB ports
Hard disk	Solid state disk SSD	Solid state disk SSD
Cooling	Fanless	Fan
Certifications	FCC/CE/ROHS	FCC/CE/ROHS
Operating temperature	0 to 40°C 32°F to 104°F	0 to 45°C 32°F to 113°F
Standard maintenance	Included	Included
Gold maintenance	Optional	Optional
Product ref.	E510101	E520201

#### Features

- VPN:** True SSL/TLS VPN (Open VPN)  
Encryption: DES, 3DES, AES, 128/192/256-bit  
Authentication: Pre-shared key, X.509, Certification  
Authority
- Routing:** VPN bridge mode  
Destination-based routing
- Warranty:** 18 months  
Check our warranty policy: [www.ewon.biz/warranty](http://www.ewon.biz/warranty)

For successful integration, find your eWON Certified  
System Integrator  
[www.ewon.biz/eCSI](http://www.ewon.biz/eCSI)



#### Head Office

22 Av. Robert Schuman  
1400 Nivelles  
Belgium  
Tel: +32 67 895 800  
[info@ewon.biz](mailto:info@ewon.biz)

#### North American Office

2345 Murray Ave, suite #305  
Pittsburgh, PA 15217  
USA  
Tel: +1-412-586-5901  
[info@ewon.us](mailto:info@ewon.us)

#### Japan Office

Dai 2 Izumi Shoji Bldg. 4 F,  
2-6 Kojimachi 4-Chome,  
Chiyoda-Ku, Tokyo 102-0083  
Japan  
Tel: +81-3-6821-1655  
[info@ewon.co.jp](mailto:info@ewon.co.jp)

[www.ewon.biz/eFive](http://www.ewon.biz/eFive)