

EYE-LCD4000M & 4600M

With the new EYE-LCD4000M and EYE-LCD4600M eyevis offers a revolutionary TFT-LCD-based technology. Best image quality, high contrast, high brightness and high resolution are the main features of these new display modules. The displays are available with 40" and 46" screen diagonals.

The TFT-LCD screens are cascadable, i.e. they can be combined to build up a large screen wall. The gaps in-between the individual display modules will be tighter than ever before. This possibility for a large screen construction is absolutely unique in the fields of large screen visualisations. Thanks to the narrow bezel of the displays, the gaps between the modules is only 28 mm wide (30 mm with 46"), so we can almost talk of them as being "frameless". Other available TFT-LCD displays have a bezel of at least 45mm. Because the gaps between those displays were rather large they were hardly ever used for large screen walls.

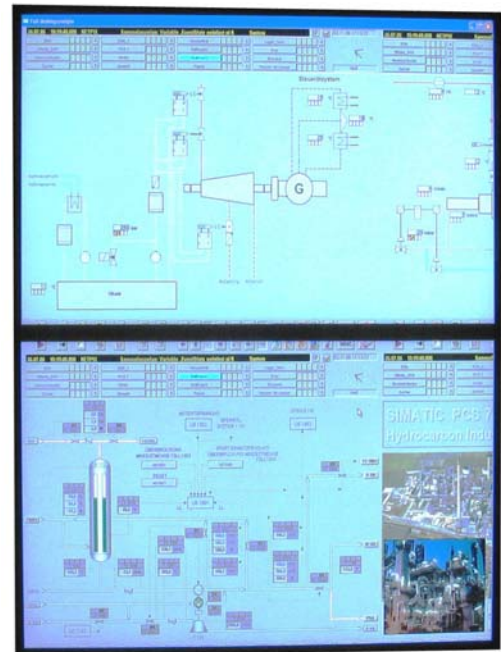


eyevis reduced the bezel of its new TFT displays to a minimum. In contrast to plasma displays, which are also available in frameless versions, you do not have the danger of "burn-in" effects with our TFTs. Already after a short representation of a static image these effects occur on plasma displays and cause irreparable damages to the screen. The so called "Memory" effects on TFT displays disappear when the screen is switched off for while.

Of course, the EYE-LCD4000M and 4600M have the ultra-thin and slim design that is typical for TFT-LCD displays. This allows their flexible installation in almost every area of application.

Features:

- unlimited number of cascadable displays
- „frameless“ design, minimal gaps
- low installation depth
- slim design
- best image quality



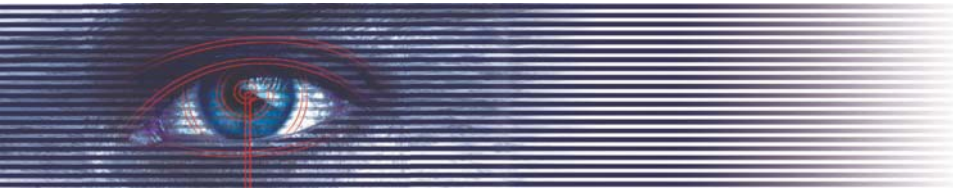
Whether you want to display video signals or computer signals, any kind of data can be displayed on the EYE-LCD4000M/4600M. In combination with the eyevis netpix controller and the eyecon software a medium for representation and information can be created that perfectly fits for smaller control rooms in which the space-factor is a main criteria. In addition to that, you will attract more attention than before with your presentations, since these displays are the ideal medium to transport your company's message.

Almost unlimited application possibilities: Trade fairs, POI/POS, events, control rooms (e.g. traffic control, security centres, etc.), conference rooms, lobbies, show rooms, tv studios, merchandising ...

eyevis provides all necessary accessories for wall and ceiling installations. Moreover, we offer a range of customised solutions (supporting stands, mobile stands, etc.). Special casings are also available (protection against vandalism, environmental influences,

Areas of application:

- control rooms (e.g. for video surveillance)
- boardrooms
- show rooms
- conference rooms
- POS/POI
- trade fairs / events



EYE-LCD4000M & 4600M

Technical Data:		
LCD Display		
Technology:		TFT LCD
Resolution:		1366 x 768 Pixel (WXGA)
Pixel Pitch:	40"	0,648 mm
	46"	0,7455
Active Screen Area:	40"	885,17 x 497,66 mm
	46"	1018,35 x 572,54 mm
Image Characteristics:		
Colours:		16.7 million
Image format:		16:9
Viewing Angle:		176°
Response Time:		6.5 ms
Contrast Ratio:		1200 : 1
Brightness:		700 cd/m ²
Aspect Ratio:		16:9
Connectivity		
Inputs		DVI, RGB
Dimensions & Weight		
Dimensions:	40"	912 x 542 mm
	46"	1047,4 x 600,6 mm
Weight:	40"	25 kg
	46"	30 kg
Environmental Conditions		
Temperature		typ. 15 - 20 °C (max. 25-29 °C)
Humidity		typ. 25 - 60 % (max. 90% RH), not condensing

40": A: 91,2 cm
B: 54,2 cm
bezel: 1,4 cm

46": A: 104,74 cm
B: 60,06 cm
bezel: 1,5 cm



subject to technical change!



Postbus 3
6620 AA DREUMEL
tel. +31 (0)487-572719
fax +31 (0)487-573394
www.raster-products.nl



eyevis GmbH

In Laisen 76 • 72766 Reutlingen • Germany
Phone.: + 49 (0) 7121 43303 - 0 • Fax: + 49 (0) 7121 43303 - 22
www.eyevis.de • info@eyevis.de

October 2006 • Subject to change!
Copyright © 2006 eyevis GmbH. All Rights Reserved.

