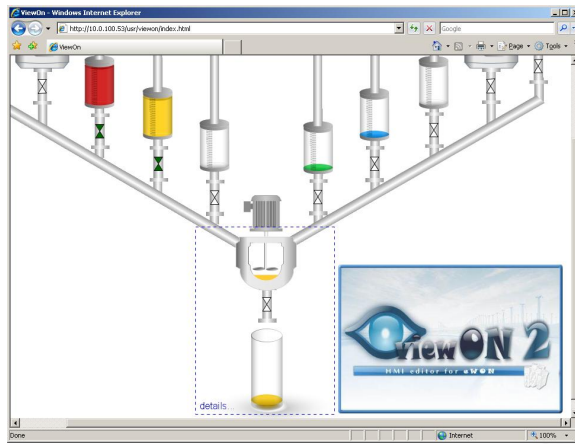


You select...
You
 We connect
 We

Highlights

- Intuitive User Interface
- No Web skills required
- Small page footprint, compatible with PSTN and GPRS connections
- Optimized HTTP download throughput rate for faster download
- WYSIWYG interface
- Real-time and historical trends
- Alarms history and acknowledgment
- Integrated simulator in the viewON 2 editor interface
- Enhanced graphical editing environment



viewON 2 is a graphical environment for designing animated HMI pages for the eWON product line.

viewON 2 enables you to create HMI web pages containing entire synoptics with various objects and animations, within minutes, in just a few mouse clicks and with no specific web skills or knowledge

required. viewON 2 provides powerful graphical tools and animations such as rotation, translation, bar graphs, color on state, etc. as well as graphical components for graph trends and alarms management.

Thanks to viewON 2, it is now possible to remotely monitor and interact with automated processes for remote assets from your web browser interface, through your own customized HMI. Whether you are an engineer, a maintenance operator, a machine builder or system integrator, viewON 2 gives you the graphical capabilities to implement your own improvements in the monitoring and control of remote assets/machines.

Typical Applications

- Infrastructure & Utilities:** Local or remote application monitoring and control (windmills, HVAC, building management, water & waste water, etc.)
- Machine Builders:** remote device front-end and application HMI with low bandwidth connections (service & maintenance, predictive maintenance, etc.)
- Industry:** Cost-effective SCADA for small and medium applications.



Drawing tool	Group, Order, Align, Distribute, Flip, Rotate
Figures	Rectangles and squares, ellipses and circles, bézier lines and curves
Graphical Components	Button, Check box, Toggle button, Number editor, slider, Alarm summary, Alarm History, Menu Bar, Trends
Animations	Color on state or on measure, Bar graph, Opacity on state or on measure, Translation, Rotation, Scale
Symbols	Library symbols, fully vectorized, SVG format
Graphical properties	Colors, Transparency, fill style with linear or circular gradient effect, line style, orientation
Programming	Scripts in BASIC language
eWON Communication	Import of eWON tag names database. Automatic page compile and export
Project Management	Multi-project, multi-page
Web server	1 Mb to 3 Mb storage space for web pages (according to memory setup). Very small page footprint
Refresh Rate	All tags refreshed every 5 seconds
Languages	English, French
eWON Requirements	eWON 4xxx model Firmware 5.4 or upper
PC requirements	PC running Windows XP or Vista Compatible with all Java enabled web browsers (Internet Explorer, Firefox, ...)
Product Ref.: VW2000x	<ul style="list-style-type: none"> - x = 1 One viewON2 perpetual license, no maintenance fee - x = 3 Three viewON2 perpetual licenses for same customer, no maintenance fee

Your eWON distributor:


 Postbus 3
 6620 AA DREUMEL
 tel. +31 (0)487-572719
 fax +31 (0)487-573394
 www.raster.com
 info@raster.com

List of local distributors & partne

eWON s.a. is a Belgian electronic and industrial engineering company. With the successful launch of the eWON product line in 2001, eWON became a worldwide market challenger for intelligent Ethernet gateways and industrial IP routers. Thanks to its growing market recognition, the eWON concept and its service product range have become a reference and a quality standard for every major company in the industry.

 Av. de l'Artisanat 10A | 1420 Braine-l'Alleud | Belgium
 Tel : +32 (0) 2 387 27 82 | Fax : +32 (0) 2 384 47 16
 sales@ewon.biz